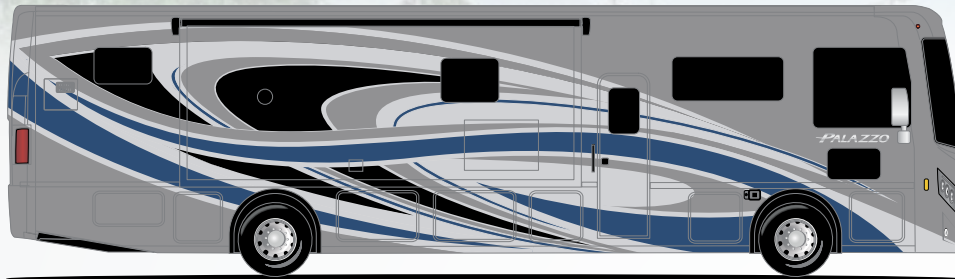
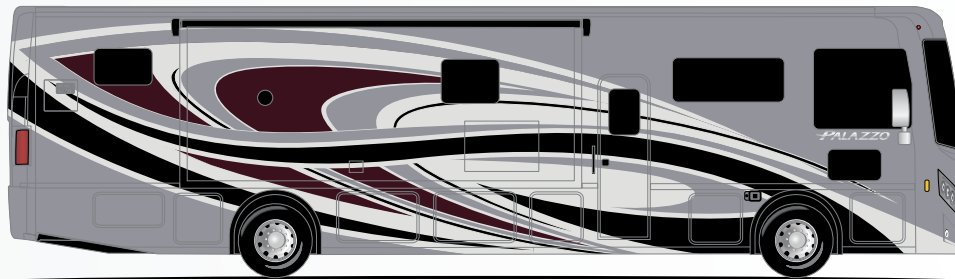


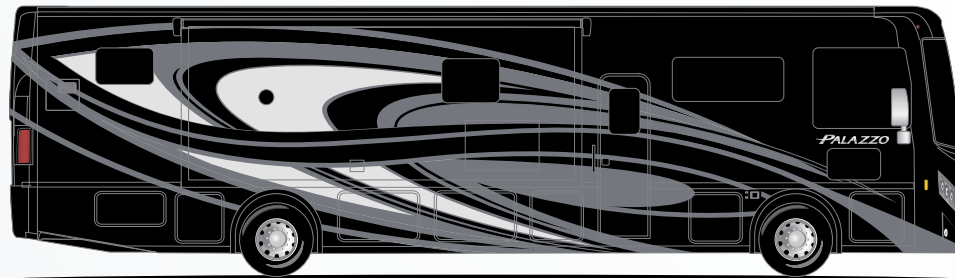
# PALAZZO®



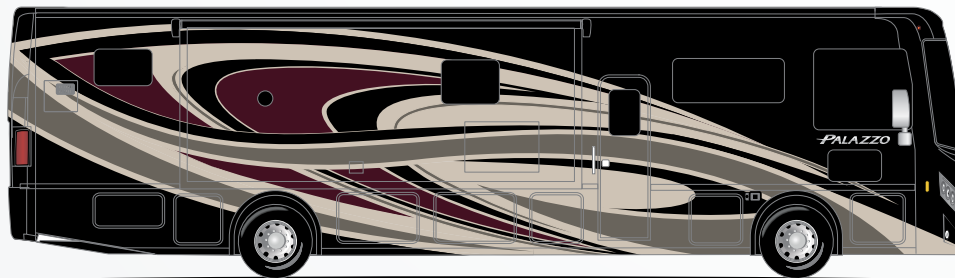
CHAMBERS BAY



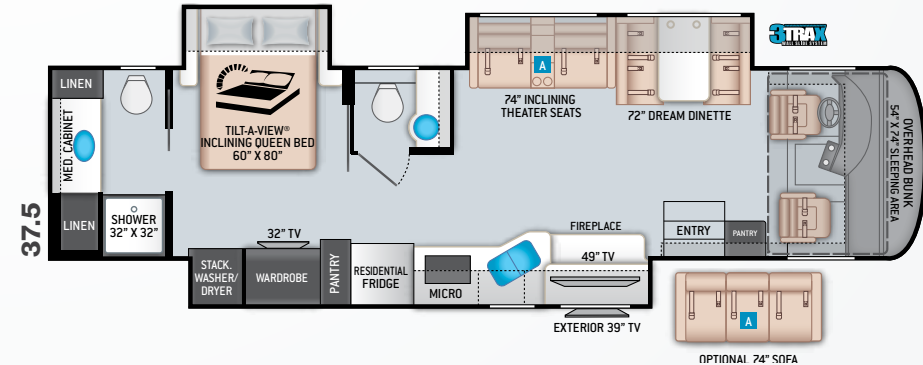
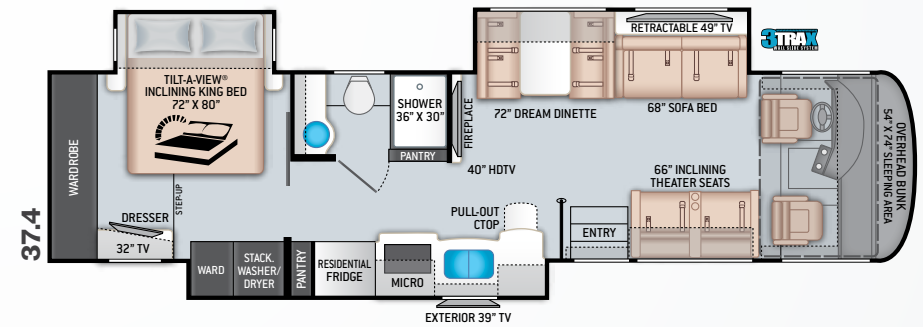
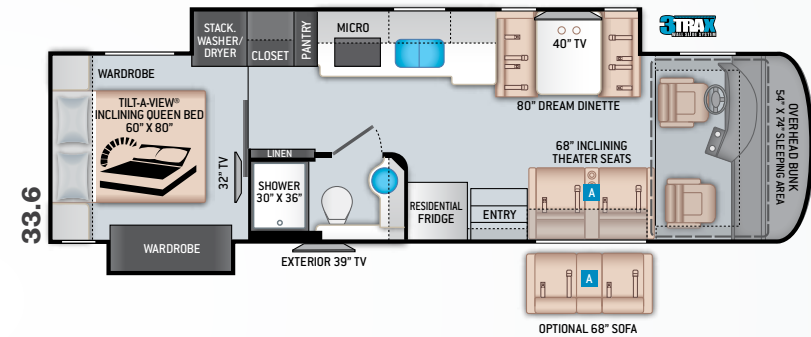
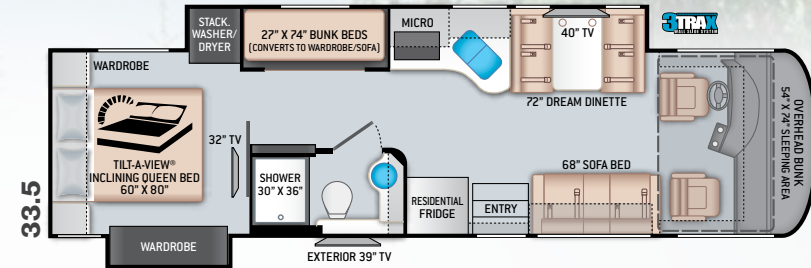
OAKMONT



ST. ANDREWS



TORREY PINES



# Featured Highlights

## CONSTRUCTION & EXTERIOR

- Freightliner® XC-S Straight Rail Chassis with Atlas Foundation™
- Cummins® ISB 6.7L Diesel Engine with 300HP, 660 lb.-ft. Torque (33.5 & 33.6)
- Cummins® ISB 6.7L Diesel Engine with 340HP, 700 lb.-ft. Torque (37.4 & 37.5)
- 160-amp, 12-volt Alternator
- In-Block, 750-watt Engine Heater
- 6-Speed Allison Automatic Transmission
- Full Air Front & Rear Drum Anti-Lock Brakes
- I-Beam Front Axle with 55° Wheel Cut
- Air-Ride™ Suspension
- Exhaust Brake
- Sachs® Shock Absorbers
- Under-Hood Light
- 90-gallon Fuel Tank with Dual Fills
- 10,000-lb. Trailer Hitch with 7-pin Round Connector
- Automatic Leveling Jacks with Touchpad Controls
- Welded Tubular Steel Floor
- Welded Tubular Aluminum Roof & Sidewall Cage Construction
- Vacu-Bond Laminated Roof, Walls & Floors with Block Foam Insulation
- One-Piece Fiberglass Front & Rear Caps
- One-Piece Windshield
- One-Piece TPO Roof
- Full-Body Paint Package with Gel-Coat Sidewalls with Invisible Front Paint Protection
- Basement Pass-Through Storage Compartment
- Easy Slide Storage Tray (33.5 & 33.6)

- Side-Hinged, Flush Mount Radius Compartment Doors
- Lighted Storage Compartments
- Power Patio Lateral Arm Awning with Integrated LED Lighting
- Slideout Room Topper Awnings
- 3TRAX® Wall Slide System
- Frameless Dual Pane Windows

## AUTOMOTIVE & COCKPIT

- 10.1" Touchscreen Dash Radio with Bluetooth® & SiriusXM® Ready
- Chrome Heated/Remote Exterior Mirrors with Integrated Side View Cameras
- Cruise Control
- Tilt/Telescoping Steering Column
- Dash Workstation with 110-volt & 12-volt Outlets
- Dash Fans
- Power Roller Shade on Windshield
- Manual Roller Shades on Side Windows
- Power Drop-Down Hide-Away Overhead Bunk with Cotton Cloud™ Mattress & Bunk Ladder
- Emergency Engine Start Switch
- Three-point Seat Belts for Driver and Passenger
- Leatherette Reclining/Swivel Captain's Chairs with Lumbar Support
- Valve Stem Extenders on Rear Wheels
- 255/70R 22.5" Radial Tires with Aluminum Wheels
- Fog Lights
- Bird's Eye™ Window

## INTERIOR

- Residential Vinyl Flooring
- High-Gloss Glazed Cabinetry with Solid Wood Raised Panel Cabinet Doors & Nickel Finish Hardware
- Window Solar & Privacy Shades in Living Area
- LED Lighting
- Soft Touch Vinyl Ceiling
- Leatherette Sofa Bed (33.5 & 37.4)
- Leatherette Inclining Theater Seating with Footrests (33.6, 37.4, & 37.5)
- Dream Dinette® Booth with 4 Seat Belts
- Electric Fireplace with Remote Control (37.4 & 37.5)
- Smoke, LPG & Carbon Monoxide Detectors
- Monitor Panel with LPG Readout

## INTERIOR OPTIONS

- Leatherette Sofa Bed (33.6 & 37.5)
- Studio Collection Cabinetry with Rake Style Doors & Matte Finish

## KITCHEN

- Double Door Refrigerator
- Electric Induction Cooktop
- 30" Over-the-Range Convection Microwave Oven
- Solid Surface Countertops
- Pop-Up Countertop Outlet
- Large, Double Bowl Stainless Steel Sink & Single Handle Faucet with Pull-Down Sprayer
- 12-volt Attic Fan with Cover

## BEDROOM & BATHROOM

- King Size Bed with Tilt-A-View® Inclining Mechanism (37.4)
- Queen Size Bed with Tilt-A-View® Inclining Mechanism (33.5, 33.6, & 37.5)
- Bunk Beds – Converts to Sofa (33.5)
- USB Charging Ports in Nightstands
- Attractive Headboard, Bedspread & Throw Pillows
- Sconce Wall Lighting (33.5 & 33.6)
- Porcelain Toilet
- Oversized Shower with Glass Door
- Power Vent in Bathroom

## ENTERTAINMENT

- 49" LED TV in Living Area (37.4 & 37.5)
- 40" LED TV in Living Area (33.5, 33.6, & 37.4)
- 32" LED TV in Bedroom
- Tablet Holder and USB Charge Ports in Bunk Beds (33.5)
- Blu-Ray Player & Sound Bar
- Exterior 39" LED TV on Manual Swivel with Bluetooth® Sound Bar
- Cable TV & HDMI Video Ready
- Winegard® Connect™ 2.0 Wi-Fi / 4G / TV Antenna

## ELECTRICAL & PLUMBING

- Onan® RV QD 6000 Diesel Generator
- 50-amp Shoreline Power Cord
- Four (4) Auxiliary House Batteries
- 2000-watt Inverter/100-amp Converter

- 100-watt Solar Charging System with Solar Controller
- Rapid Camp+® Multiplex Wiring Control System with 7" Screen & App Enabled
- Dual Roof Air Conditioners
- Exterior LP Connection
- Battery Disconnect Switch
- Automatic Generator Start
- Tankless Water Heater
- Stackable Washer/Dryer
- Water Heater Bypass System
- Black Tank Flush System
- 360° Siphon® RV Holding Tank Vent Cap
- Systems Control Center
- Outside Shower

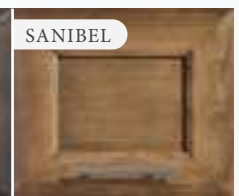
For a complete listing of available features, visit [thormotorcoach.com/palazzo](http://thormotorcoach.com/palazzo).



	33.5	33.6	37.4	37.5
Chassis	Freightliner XC-S	Freightliner XC-S	Freightliner XC-S	Freightliner XC-S
Gross Vehicle (GVWR)	26,000	26,000	31,020	31,020
Gross Combined (GCWR)	30,000	30,000	33,000	33,000
Wheel Base	208"	208"	256"	256"
Exterior Length (w/o ladder)	34'-11"	34'-11"	38'-11"	38'-11"
Exterior Height (w/AC)	12'-1"	12'-1"	12'-1"	12'-1"
Exterior Width (w/o mirrors)	101"	101"	101"	101"
Interior Height (living area)	82"	82"	82"	82"
Awning Size	18'	18'	15' / 12'-4"	18' / 3'-8"
Fuel (gal)	90	90	90	90
LPG (lbs)	105	105	105	105
Fresh/Waste/Gray Water (gal)	95 / 40 / 40	95 / 40 / 40	95 / 40 / 40	95 / 57 / 40
Water Heater (gal)	Tankless, On-Demand	Tankless, On-Demand	Tankless, On-Demand	Tankless, On-Demand
Furnace (BTUs)	35,000	35,000	35,000	35,000
Exterior Storage Capacity (cu. ft.)	126	126	170	159
Hitch Weight Rating (lbs)	10,000	10,000	10,000	10,000



STANDARD COLLECTION



STUDIO COLLECTION



Made to fit.

P.O. Box 1486, Elkhart, IN 46515 Sales Department: 800.860.5658

[thormotorcoach.com/palazzo](http://thormotorcoach.com/palazzo)



**LaMesa** REC VAN

LaMesaRV.com  
800-496-8778

**IMPORTANT—PLEASE READ:** This brochure reflects product design, fabrication, material, components and specifications at the date of printing, which date is disclosed below. Please visit us online at [ThorMotorCoach.com](http://ThorMotorCoach.com) or consult with your selling dealership for the latest in standards, options, specification and technical information. Photographs in the brochure may depict optional equipment or may only be available in certain floor plans. Components, appliances and the chassis may have been manufactured in a calendar year before the vehicle's designated model year. All capacities are approximate. The actual length of the vehicle may differ from that indicated in the brochure due to variances in the manufacturing processes and/or installed components. All dry weights are based on standard model features and do not include optional features or equipment. Component part and appliance manufacturers issue limited warranties covering portions of the vehicle not covered under the limited warranty we issue. Copyright Thor Motor Coach, Inc. © OH 03/11/2021